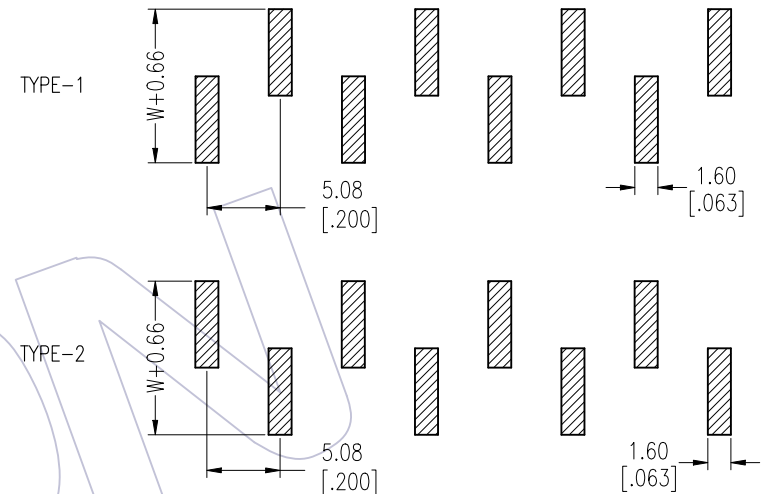
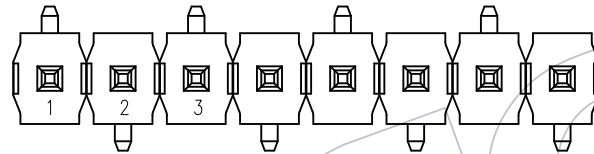
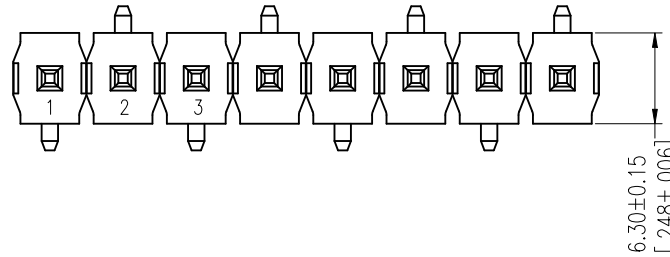


HSF

NOTES:
 Rated Current:7.0AMP.
 Contact Resistance:20mΩ Max.
 Withstand Voltage:1000V AC/DC
 Insulation Resistance:1000MΩ Min.
 Operation Temperature:-40℃ to +105℃

Contact Material:Brass
 Contact Plating:Au or Sn Over Ni
 Insulator Material:LCP+30%G.F UL94V-0 BK

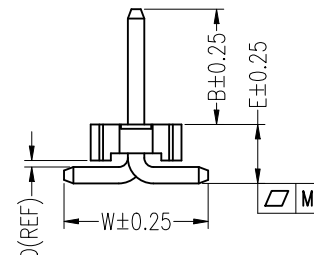
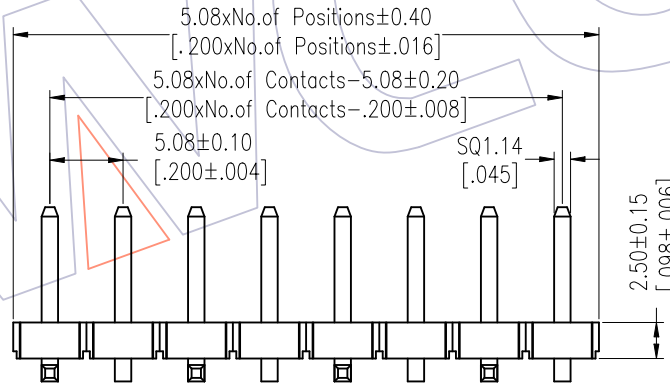
Recommended P.C.B Layout (Top Side)
 (PCB BOARD TOLERANCE±0.05)



Ordering Information

1925-11 XX XX M XXX D T XX

No. of Pins	Contact Plating	Pin Length	Insulator	Packing	Series No.
02~20	G0=Gold Flash SN=Tin SM=Matte Tin	L=B+D+2.5+ $\frac{W}{2}$ Std:159=15.9	D=LCP	A=Tray T=Tube	01~99



Item	Pin Length	W	E	B	Mating
Standard	15.9	10.00	4.09	8.00	2989
Alternate					

PIN(PerRow)	A2	
	2-10P	11-20P
M	0.12	0.20

REV	DATE	MODIFICATION DESCRIPTION	CHANGE	OPERATION	DRAW	DATE	SCALE	Fit	PART NO.
A2	2023/02/04	Add Flatness $\triangle A2$	Du Ying	X.X ±0.40	Du Ying	2023/02/04	UNIT	mm [inch]	1925-11XXXXMXXDXXX $\triangle A2$
A1	2018/01/26	MODIFY PART NO.	William Chen	X.XX ±0.25	CHECK	DATE	SIZE	A4	TITLE: 5.08 Pin Header, SINGLE ROW, SMT, H=2.5
A0	2012/07/03	NEW	-----	X.XXX ±0.15	APPROVE	DATE	SHEET	1/1	Customer NO.
				Angle ± 3'			PROJ.		
				DIM TOL					

WCON
 Http: www.wcon.com
 WCON-Dongguan Tel: +86 769 85358920
 WCON-Kunshan Tel: +86 512 57468408
 Fax: +86 769 85358915
 Fax: +86 512 57468468
 E-mail: sales@wcon.com
 E-mail: salesks@wcon.com