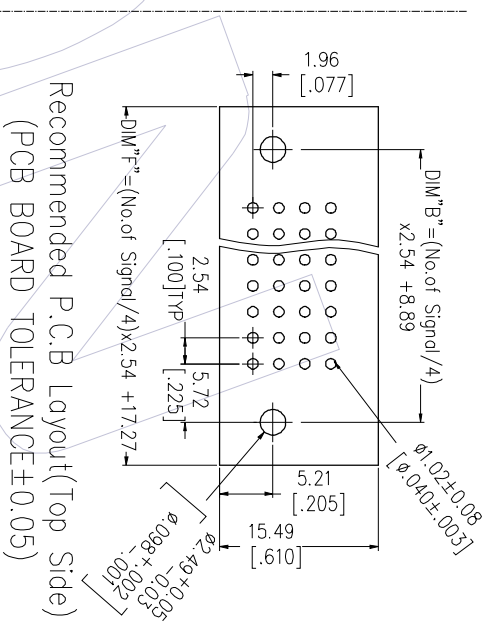
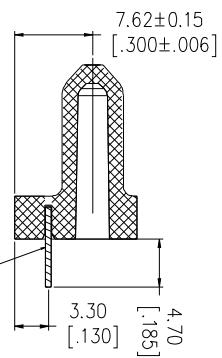
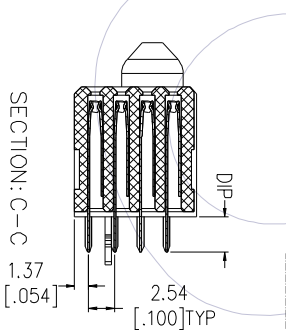
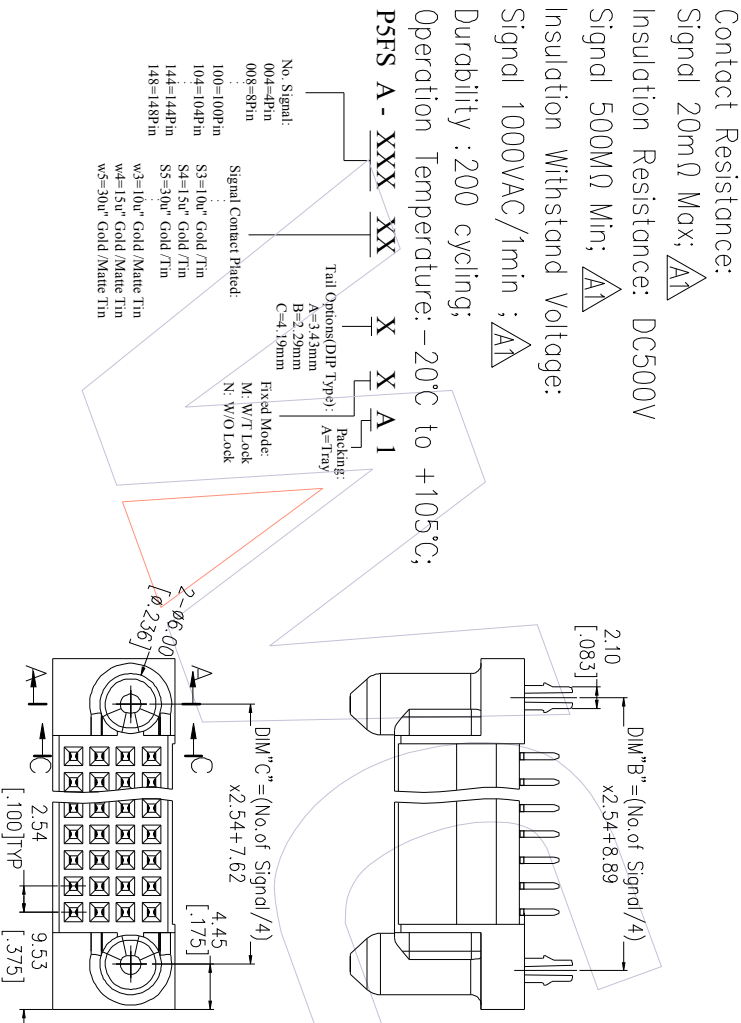
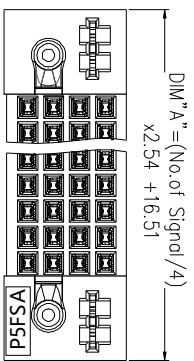


NOTES:

1. Insulator material: PA9T+33%GF, UL94 V-0;
2. Terminal material: Copper Alloy;
Terminal Plating: Au/Sn Plated Over Nickel ;
3. Rated Voltage: Signal 50V; $\Delta\Delta$
4. Rated Current: Signal 2.5A; $\Delta\Delta$
5. Contact Resistance: $\Delta\Delta$
Signal 20m Ω Max;
6. Insulation Resistance: DC500V
Signal 500M Ω Min; $\Delta\Delta$
7. Insulation Withstand Voltage:
Signal 1000VAC/1min ; $\Delta\Delta$
8. Durability : 200 cycling;
9. Operation Temperature: -20°C to +105°C;



No. Signal:
004=4Pin
008=8Pin
100=100Pin
104=104Pin
144=144Pin
148=148Pin

Signal Contact Placet:
S3=10u" Gold/Tin
S4=15u" Gold/Tin
S5=30u" Gold/Tin
w3=10u" Gold/Matte Tin
w4=15u" Gold/Matte Tin
w5=30u" Gold/Matte Tin

Tail Options (DIP Type):
A=3.43mm
B=2.29mm
C=4.19mm

Fixed Mode:
M: W/T Lock
N: W/O Lock

Packing:
A: Tray

SECTION: A-A

LOCK: See Coding

REV	DATE	MODIFICATION DESCRIPTION	CHANGE	OPERATION	DRAW	DATE	SCALE	FIT	PART NO.	TITLE:	WCON-Dongguan	WCON-Kunshan
A1	2022/03/28	Modify Notes		X.X	PAN	2022/03/28	mm	inch	PFSA-XXXXXXA1	PSP Spacing A 180° DIP FEMALE (TYPE-5.254 Signal)	Http: www.wcon.com	
A0	2018/10/15	NEW		X.XXX	CHECK		mm	A4				
				X.XXX	APPROVE		mm	1/1	Customer NO.			
				Angle								
				± 3°								
				DIM								
				TOL								