

HSF

TECHNICAL SPECS:

Current Rating: 3.0AMP
 Contact Resistance: 10mΩ Max
 Dielectric Strength: Min 1000V_{RMS}
 Mechanical Life: Min 500 cycles
 Mating Pin: $\phi 0.40$ to $\phi 0.66$ mm or 0.50SQ
 Forces: (polished steel gauge $\phi 0.47$ mm)
 Insertion: 200g Max/Pin, Withdrawal: 60g/Pin
 Operation Temperature: -40°C to $+105^{\circ}\text{C}$

Sleeve: Brass CuZn36Pb3(C36000), Sn over Ni
 Contact Clip(4 finger): BeCu(C17200), Au or Sn over Ni
 Insulator Material: PPS+30%G.F(UL94V-0)

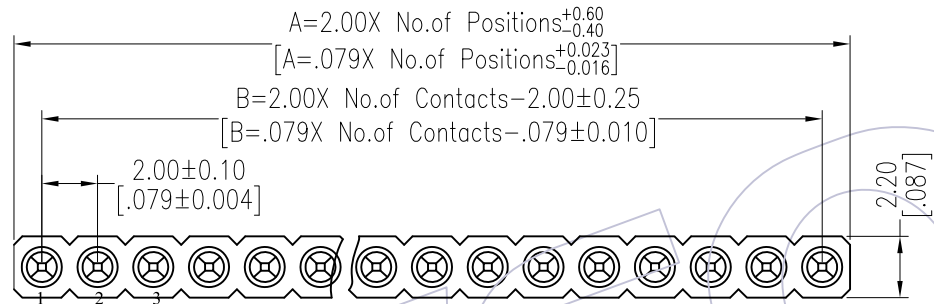
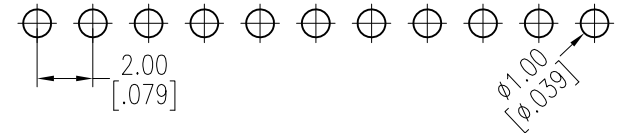
Ordering Information

3522-281 XX S XX 059 X 1

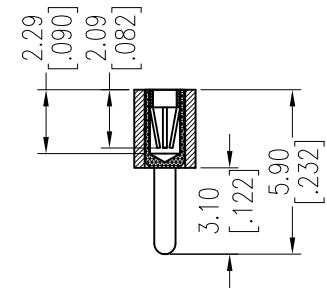
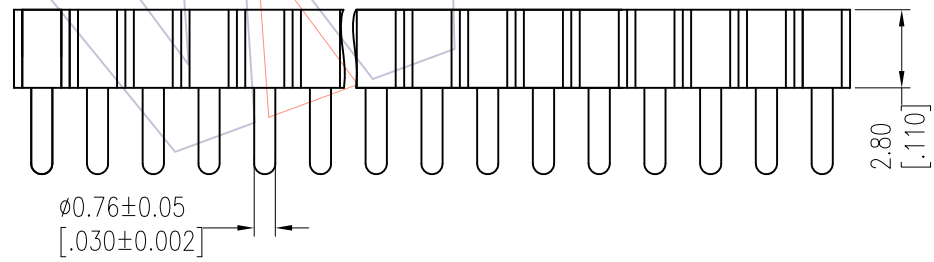
No. of Pin 2-40PIN	Contact Plating S0=Gold Flash/Tin S3=10u"Gold/Tin S4=15u"Gold/Tin S5=30u"Gold/Tin SN=Tin	Packing A=Tray T=Tube
-----------------------	---	-----------------------------

Item	Pitch	Mating
Standard	2.00	3512
Alternate		

Recommended P.C.B Layout(Top Side)
 (PCB BOARD TOLERANCE ± 0.05)



NO. of PIN	DIM A
40PIN	2.0*NO. of Positions + 1.00 ± 0.40
<40PIN	2.0*NO. of Positions + 0.60/-0.40



REV	DATE	MODIFICATION DESCRIPTION	CHANGE	OPERATION	DRAW	DATE	SCALE	FIT	PART NO.
				x.X ±0.40	Wang	2013/05/17	UNIT	mm	3522-281XXSXX059X1
A1	2013/05/17	Modify drawing	-----	x.XX ±0.25	CHECK	DATE	SIZE	A4	TITLE: 2.00mm MACHINED FEMALE HEADER SINGLE ROW 180° H=2.80 L=5.9
AO	2012/10/17	NEW	-----	x.XXX ±0.15	APPROVE	DATE	SHEET	1/1	Customer NO.
				Angle ± 3'			PROJ.		
				DIM TOL					

WCON

Http: www.wcon.com

WCON-Dongguan Tel: +86 769 85358920 Fax: +86 769 85358915 E-mail: sales@wcon.com	WCON-Kunshan Tel: +86 512 57468408 Fax: +86 512 57468468 E-mail: salesks@wcon.com
---	--