

# HSF

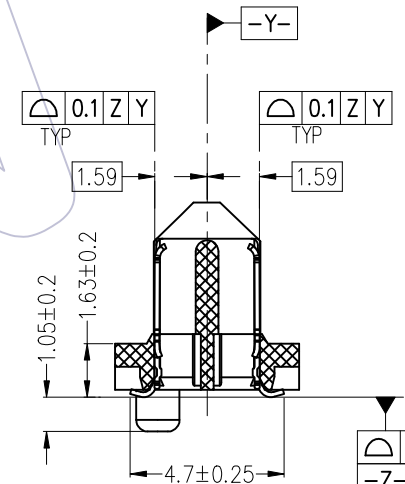
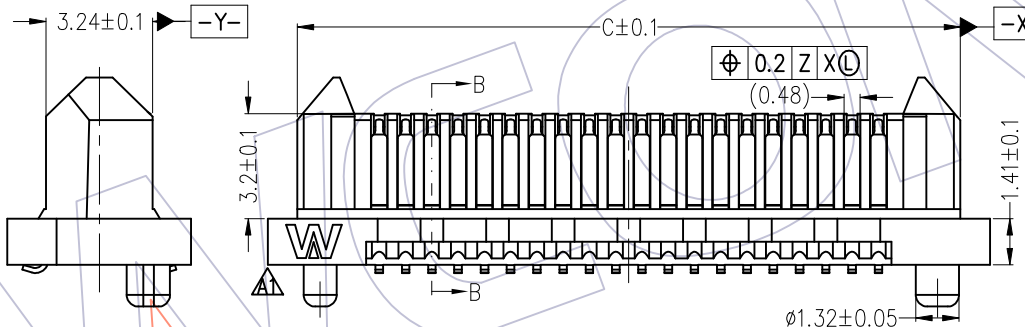
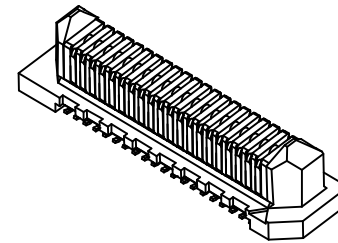
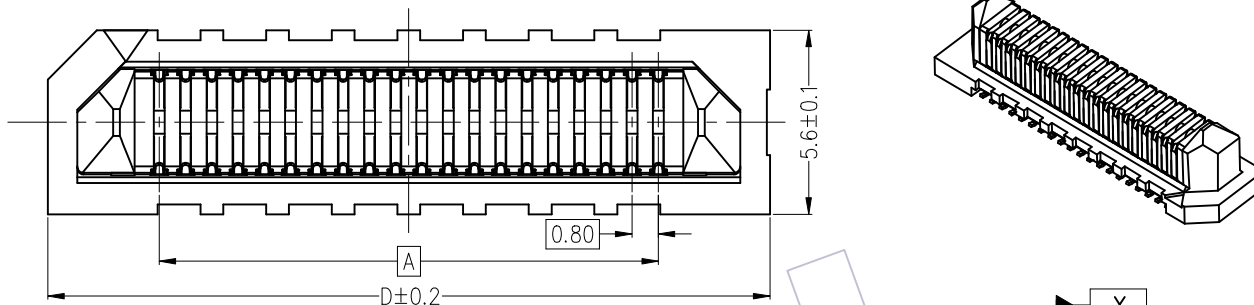
**NOTES:**

- 1.Current Rating:2.1A Max/Per Pin(2 pins powered in the same row) ;
- 2.Volatget Rating:100V AC ;
- 3.Contact Resistance: 30mΩ Max;
- 4.Withstand Voltage: 900V AC;
- 5.Insulation Resistance: 20000MΩ Min;
- 6.Operating Temperature: -55°C to +125°C;
- 7.Insulator Material: LCP,G.F,UL94V-0,BK;
- 8.Contact Material:Copper Alloy;
- 9.Contact plating:  
 $xx\mu$  Gold on contact area (See ordering information),  
 $50\mu$  Nickel underplating overall;  
Tail Area: 100u" Matte Tin ;
- 10.Recommended Process:  
Reflow Soldering,Peak temperature: 260±5°C

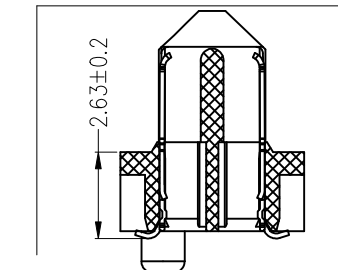
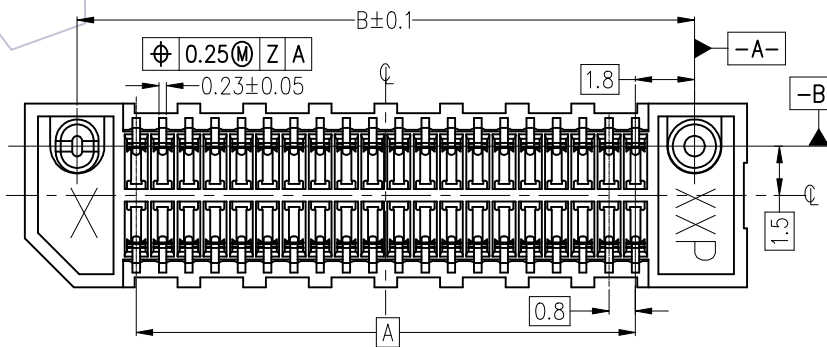
**Ordering Information**

37505 - P M XXX - XXX XX R 0X

- P=Plug
- M=180° SMT
- No.of Pins:  
010=10P; 020=20P;  
022=22P; 026=26P;  
040=40P; 046=46P;  
050=50P; 060=60P;  
070=70P; 080=80P;  
098=98P; 100=100P;  
120=120P; 140=140P;  
150=150P;  
200=200P(SEE TABLE 1);
- High Type:  
020=2.0mm; 030=3.0mm;  
050=5.0mm; 080=8.0mm;  
090=9.0mm;
- Contact plating:  
W3=10u"Gold/Matte Sn  
W5=30u"Gold/Matte Sn
- Packing:R=Tape & Reel
- 01: With Plastic Cap
- 02: With Polyimide Film Pad



37505-PMXXX-020WXROX



37505-PMXXX-030WXROX

REV	DATE	MODIFICATION DESCRIPTION	CHANGE	OPERATION		DRAW	DATE	SCALE	FIT	PART NO.
				x.x	±0.40					
A1	2023.08.04	Change the position of the LOGO	houfu peng	x.xx	±0.25	CHECK	DATE	SIZE	A4	TITLE: 0.8mm B TO B High Speed Connector Plug 180° SMT TYPE
A0	2022.09.05	NEW	houfu peng	x.xxx	±0.15	APPROVE	DATE	SHEET	1/4	Customer NO.
				Angle	± 3°			PROJ.		
				DIM	TOL					

**WCON**  
Http: www.wcon.com

WCON-Dongguan      WCON-Kunshan  
Tel: +86 769 85358920      Tel: +86 512 57468408  
Fax: +86 769 85358915      Fax: +86 512 57468468  
E-mail: sales@wcon.com      E-mail: salesks@wcon.com